

Learning Disabilities Unit

Norwich Poplarbase Development



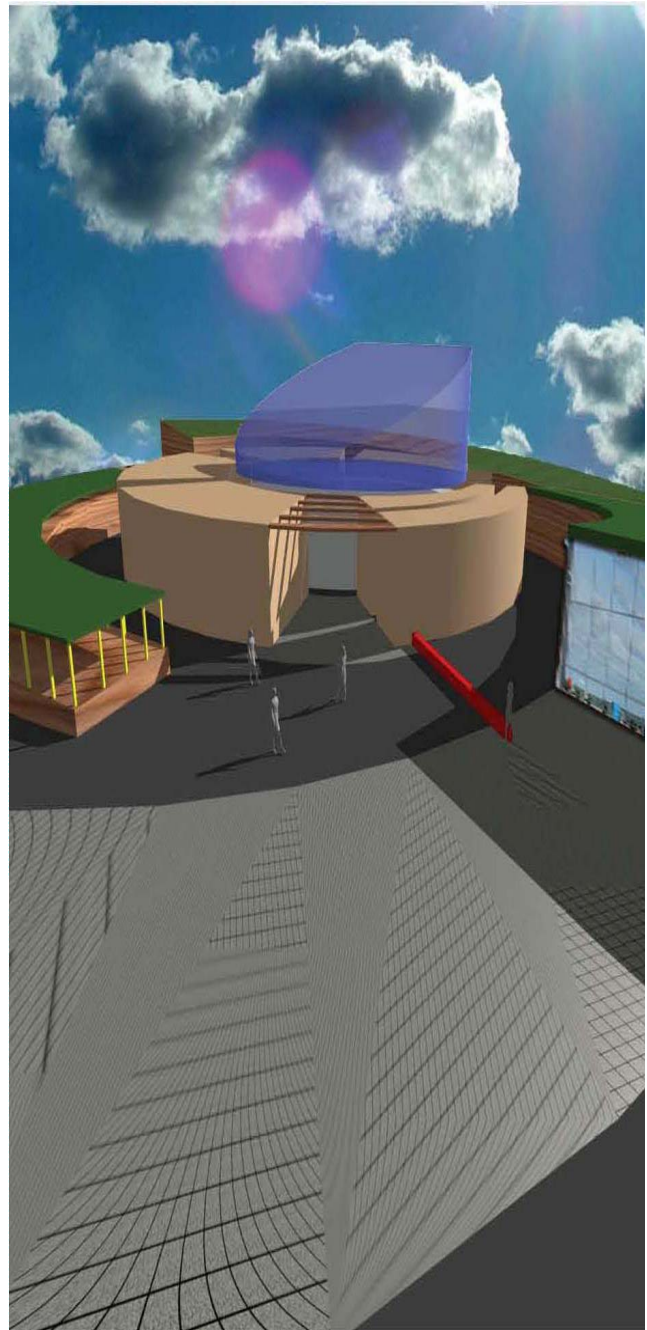
architects
project managers
cost consultants

JLA were tasked by the Hertfordshire partnership to create a modern, flexible and sustainable design for a new residential learning disabilities unit in Norwich. The concept takes the different spaces use and needs into consideration.

The central core, contains the meeting rooms, offices and dining areas, whereas the individual bedrooms and clinical areas are accessed through a courtyard, which provides privacy for the patient.

The use of energy is minimised through the use of good insulation while ensuring air tightness (with controlled ventilation). The building is orientated to enable solar penetration with the use of vegetation for shading and natural cooling within the courtyard.

The central core of the building has a cone shaped roof formed of timber with a glass apex. The angle of the roof allows for heat to be dissipated along its internal face, rather than overheating the floor area internally. Low windows to the surrounding rooms allow ventilation inside the central core and heat dissipating to the roof vaulting, minimises the need for mechanical ventilation throughout. We believe that this innovative design will enhance the experience for patients, staff and all visitors.



Client: Poplar at Little Plumstead, Norwich
Location: Hertfordshire Partnership,
NHS Foundation Trust
Value: £4 Million
Sector: Health
Skills: Architects
Interior Designers

